

St Margarets & North Twickenham

# Police Liaison Group



What is the

## Police Liaison Group ?

# **SAFER NEIGHBOURHOOD BOARD**

## **guide to**

### **POLICE LIAISON GROUPS in RICHMOND BOROUGH**

#### **PURPOSE**

The purpose of this leaflet is to provide a brief overview of Police Community Engagement, and the work of the Police Liaison Groups (PLGs) in your area.

- The key comment addresses:
- Police Community Engagement activities, and
- Police Organisation

It has been prepared as a prelude to a comprehensive Handbook for PLG Chairs.

#### **COMMUNITY ENGAGEMENT (CE)**

A key part of the Mayor's Police and Crime Plan is improving transparency, accountability and trust in policing

- To achieve this, the Police have committed to work with communities via various Community Engagement mechanisms
- Locally this involves Richmond's Safer Neighbourhood Board (SNB) and, at ward level, Police Liaison Groups
- A key aspect of CE is Outreach to our more vulnerable residents.

#### **POLICE COMMUNITY ENGAGEMENT ACTIVITIES**

- These issues are even more important right now as there has been increasing focus on policing work at the same time as reduced resources
- Public knowledge of policing operations is however generally poor and there is a huge need to improve awareness and relations.

#### **POLICE LIAISON GROUPS (PLGs)**

- PLGs represent the local community in each ward in their contact and relations with the police (elsewhere they are known as Ward Panels)
- Their prime purpose is to set police priorities, monitor performance and address issues of local concern
- Membership is open to anyone who lives, works or is educated in the ward. It should also be representative of the community and include any important local organisations
- It is useful if local Councillors attend, as issues may be raised which are initially for Council attention and not the police eg graffiti
- PLGs will have a Chair and a Secretary/Minute Taker
- It is important that the Chair is active in the ward, and the Group pays special attention to Outreach, contacting the more vulnerable and hard to reach communities
- Meetings are generally quarterly.
- St Margarets & North Twickenham currently meets three times a year.

## **SAFER NEIGHBOURHOOD BOARD (SNB)**

- The SNB is the pan-borough umbrella organisation covering all the PLGs
- As with PLGs, its main function is to establish local policing and crime priorities, monitor police performance and public confidence
- It has a formal Board with a diverse membership representing different groups eg PLGs, NHW, Multicultural agencies, Business & Youth.
- It has a small annual project spend grant from MOPAC (Mayor's Office for Policing and Crime) which is allocated to relevant priorities.
- It meets quarterly, and meetings are open to the public.

## **NEIGHBOURHOOD WATCH (NHW)**

- NHW is the largest community safety organisation in the UK
- It is very much the "eyes and ears" of the community
- Its aims are to help people protect themselves and reduce the fear of crime by fostering a community spirit
- Whilst NHW is a separate organisation, these Watches are the backbone of the PLG, and their Coordinators play a vital role as they provide information not only on how various crime types impact on their areas and their communities, but also on the level of confidence residents have in their police.
- The coordinators are also the main conduit for the police to communicate with their ward.

## **POLICE ORGANISATION**

- Each ward has its own Safer Neighbourhood Team (SNT) dedicated to that area. It will have at least one police officer – the Dedicated Ward Officer, the DW0.
- SNTs are combined in borough units, Richmond having 18 wards/teams controlled by a senior officer.
- In South West London, the four boroughs Kingston, Merton, Richmond and Wandsworth are combined in one unit, the South West Basic Command Unit (BCU)
- London's 32 boroughs are arranged in 12 BCU's, forming the Met's Neighbourhood operations.
- The Met's activities are then organised into :
  - Neighbourhood (Community Engagement)
  - Response (Emergency - 999 and 101 calls)
  - Investigation (CID etc)
  - Specialist Units eg Counter Terrorism
- Policing in London is ultimately overseen by MOPAC, headed by the Mayor, via their formal Police and Crime Plan
- Calls to 999 and 101 are handled by the Met CC (Command and Control) Unit from one of its three London sites.

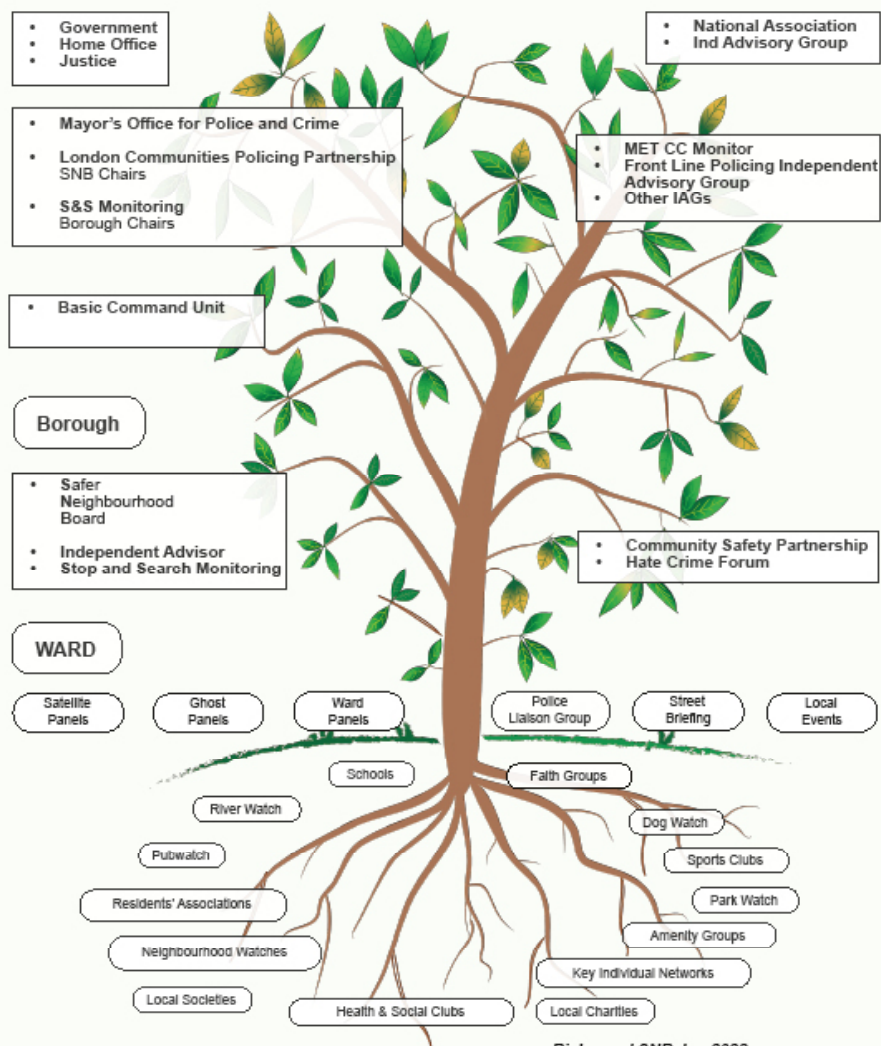
## **COUNCIL**

In Richmond, crime and safety matters are covered by the Council's Community Safety Partnership

In addition to the key Police and Fire services, membership includes representatives of many relevant agencies eg vulnerable people, youth, violent crime reduction.

# Community Engagement - Root to Tip

## London



Richmond SNB Jan 2022